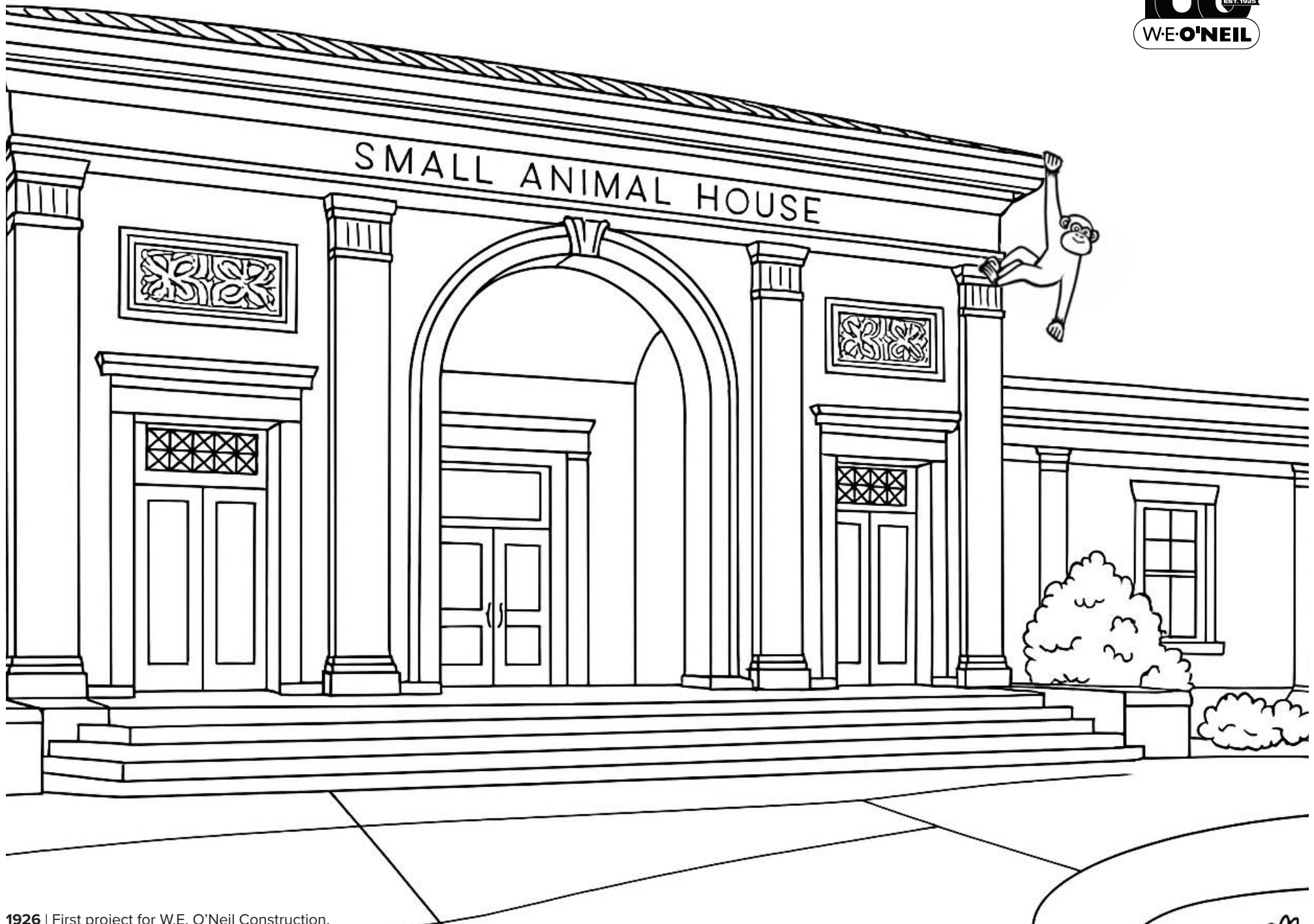




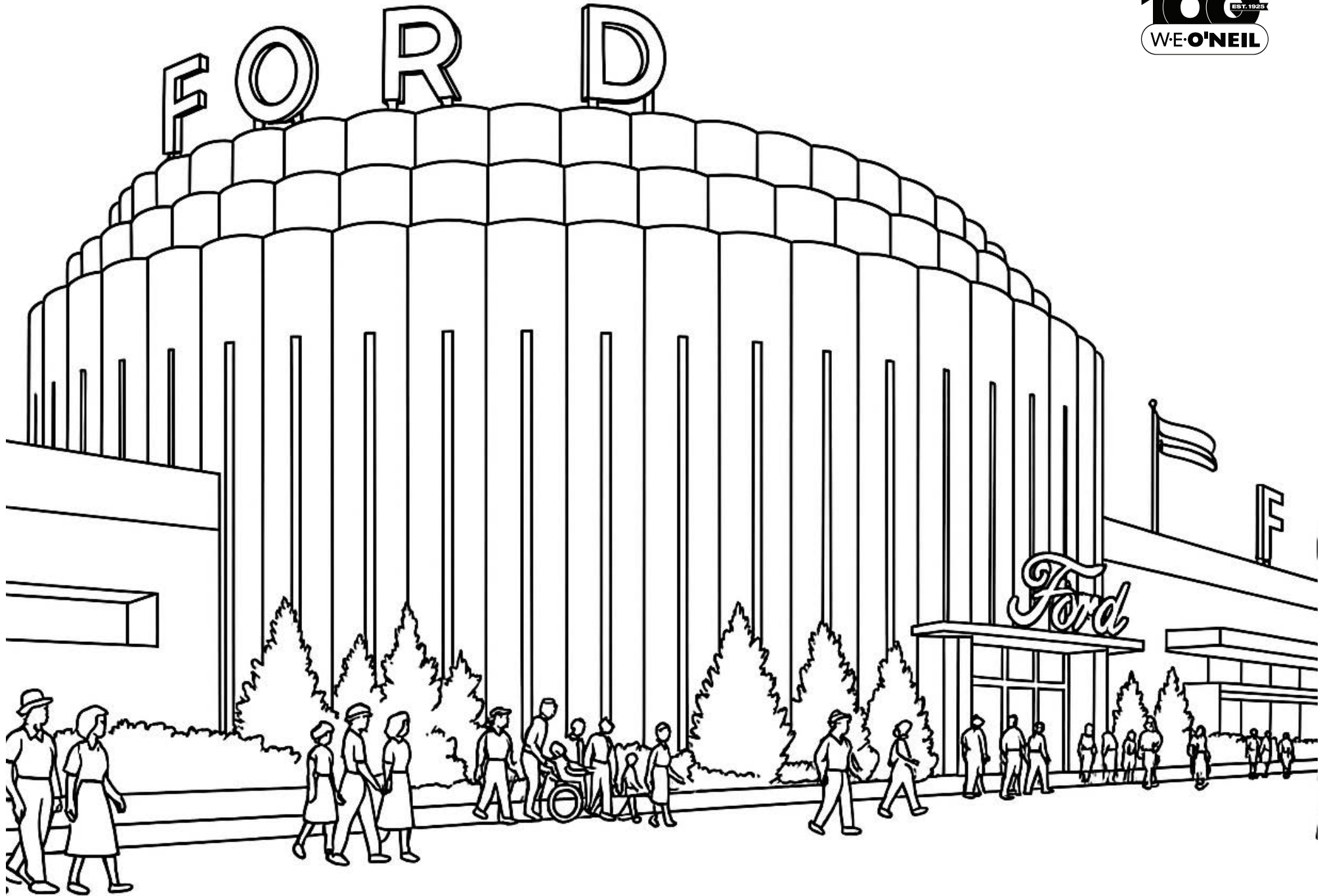
Bill O'Neil views a model of ArborLake Centre Office Building in Deerfield, IL built in 1986 alongside developer Richard Stein (left) and an architect.



**Lincoln Park Zoo Primate House**  
Chicago, Illinois



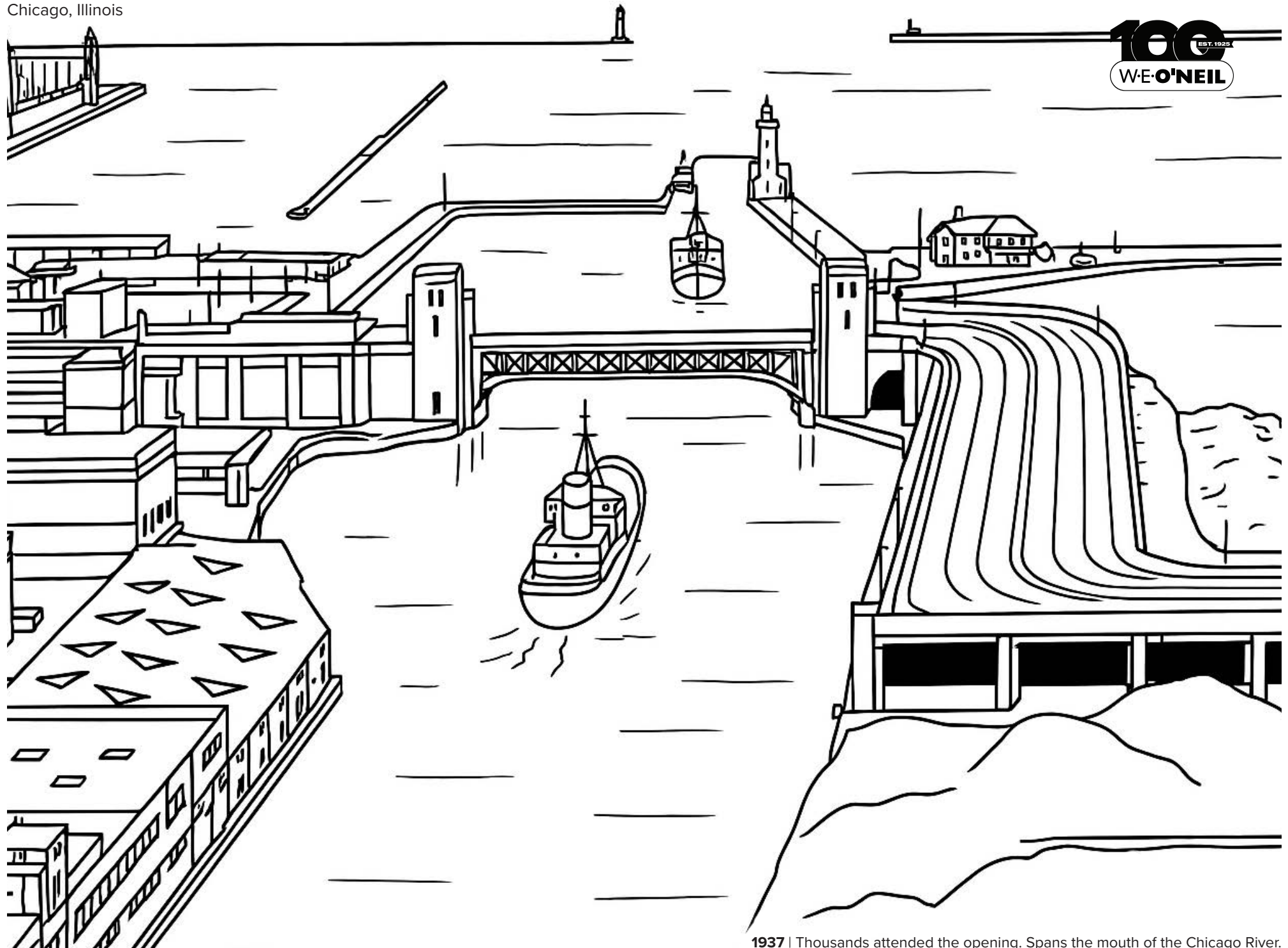
Century of Progress World's Fair, Ford Rotunda  
Chicago, Illinois





## Lake Shore Drive Bridge Approaches

Chicago, Illinois



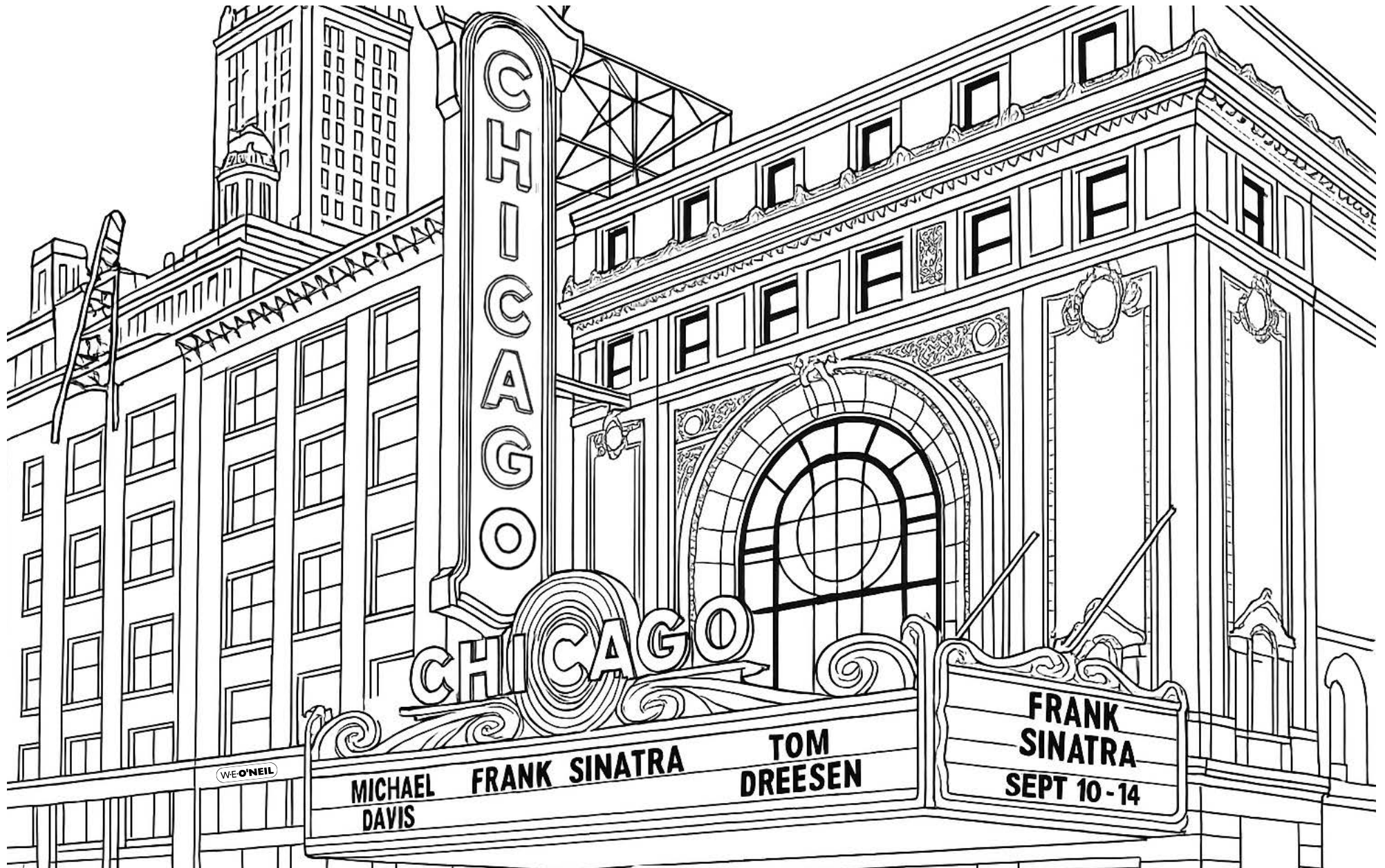
**100**  
EST. 1925  
**W·E·O'NEIL**

1937 | Thousands attended the opening. Spans the mouth of the Chicago River.

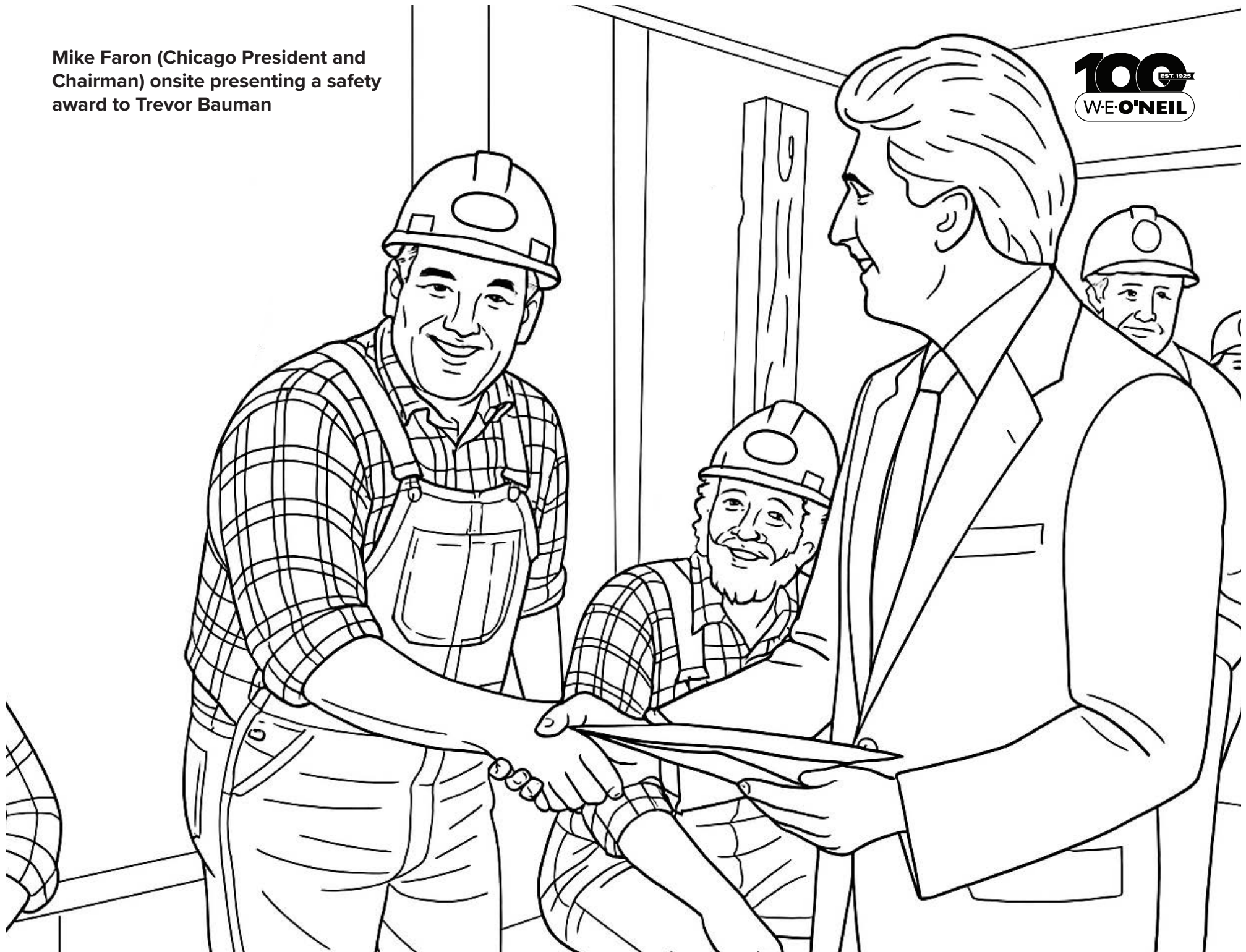
**Aviation Center**  
Manhattan Beach, California





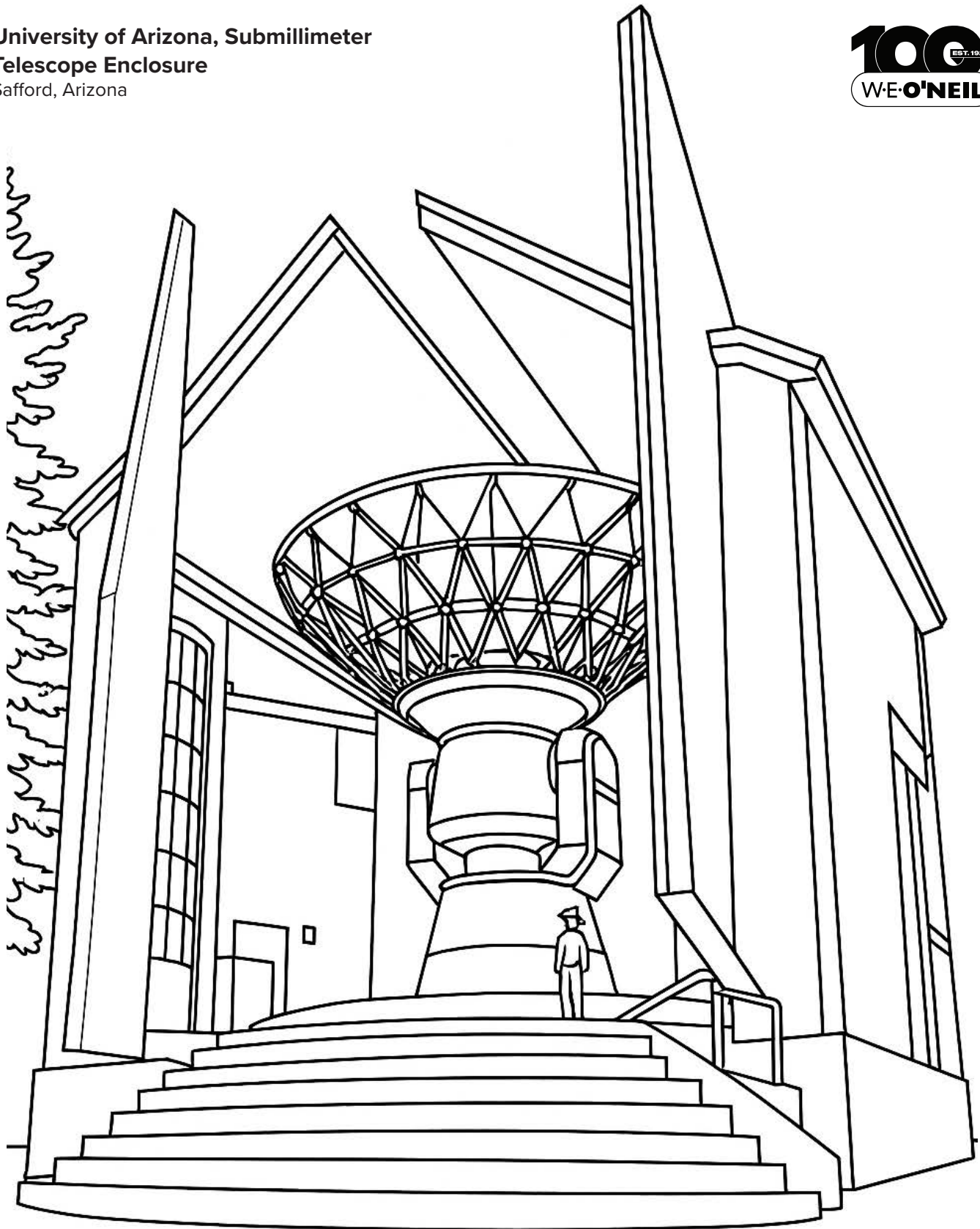


Mike Faron (Chicago President and Chairman) onsite presenting a safety award to Trevor Bauman

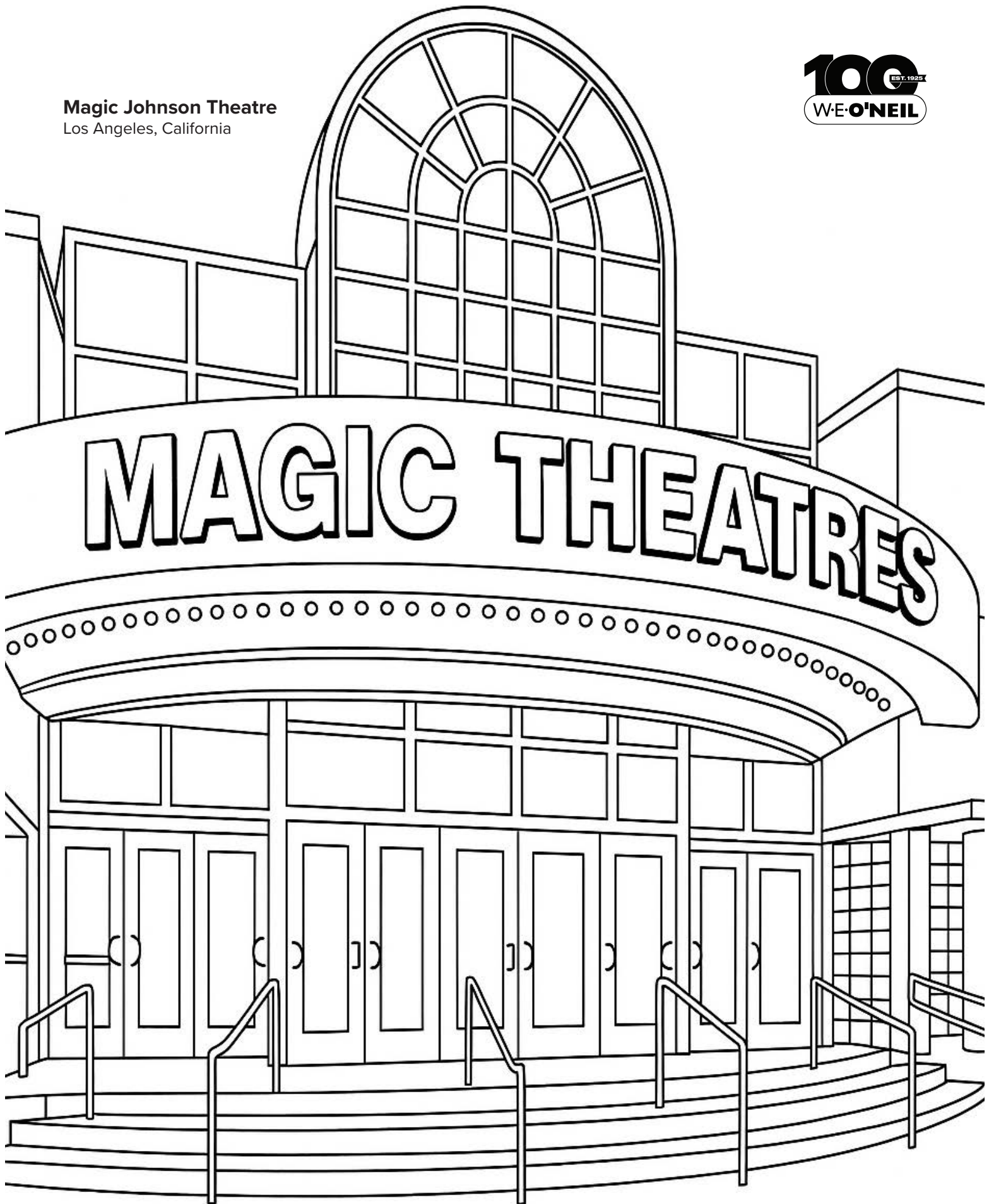




University of Arizona, Submillimeter  
Telescope Enclosure  
Safford, Arizona



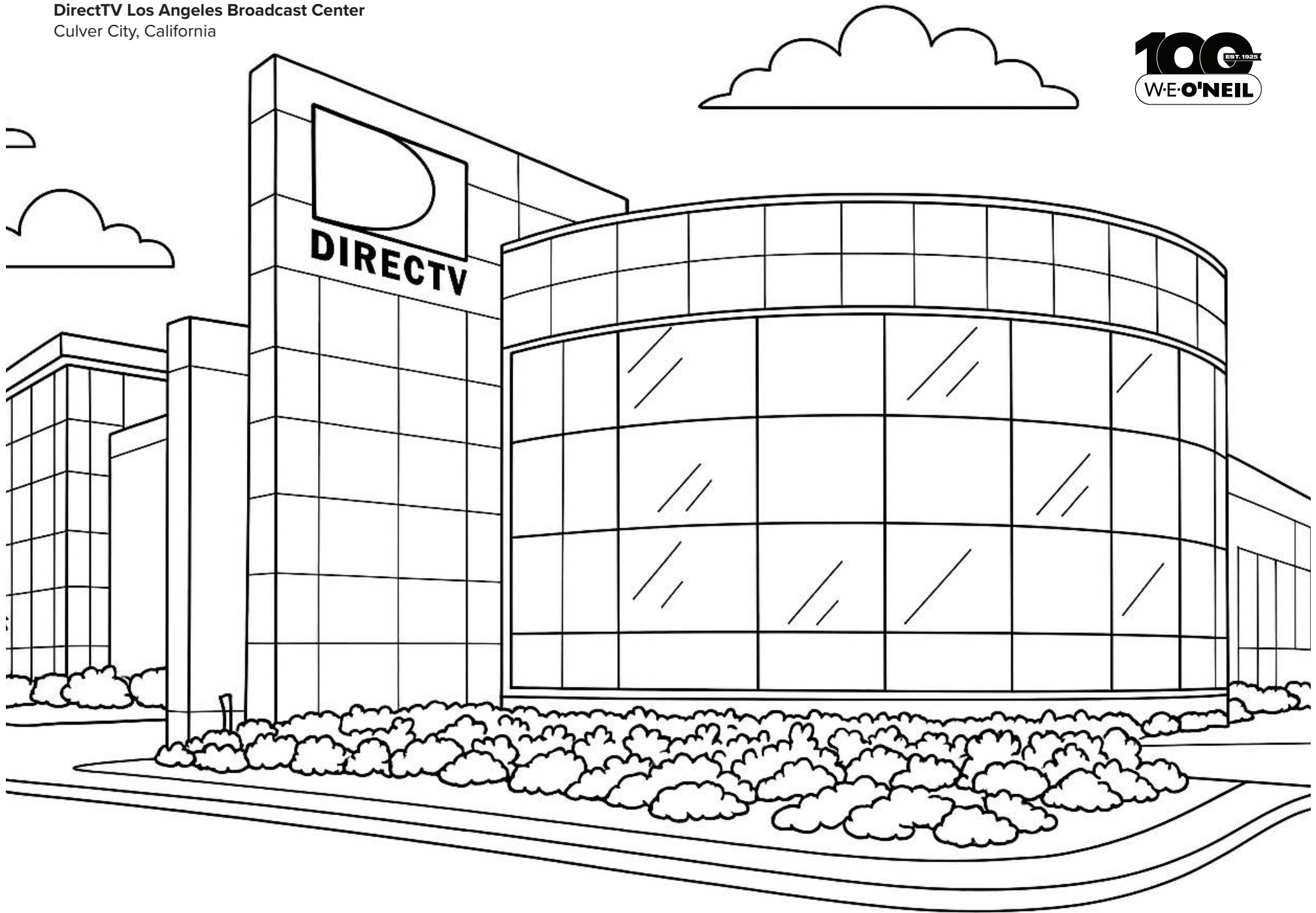
**Magic Johnson Theatre**  
Los Angeles, California



**1995** | First movie theater project for the company, built for basketball star Magic Johnson.

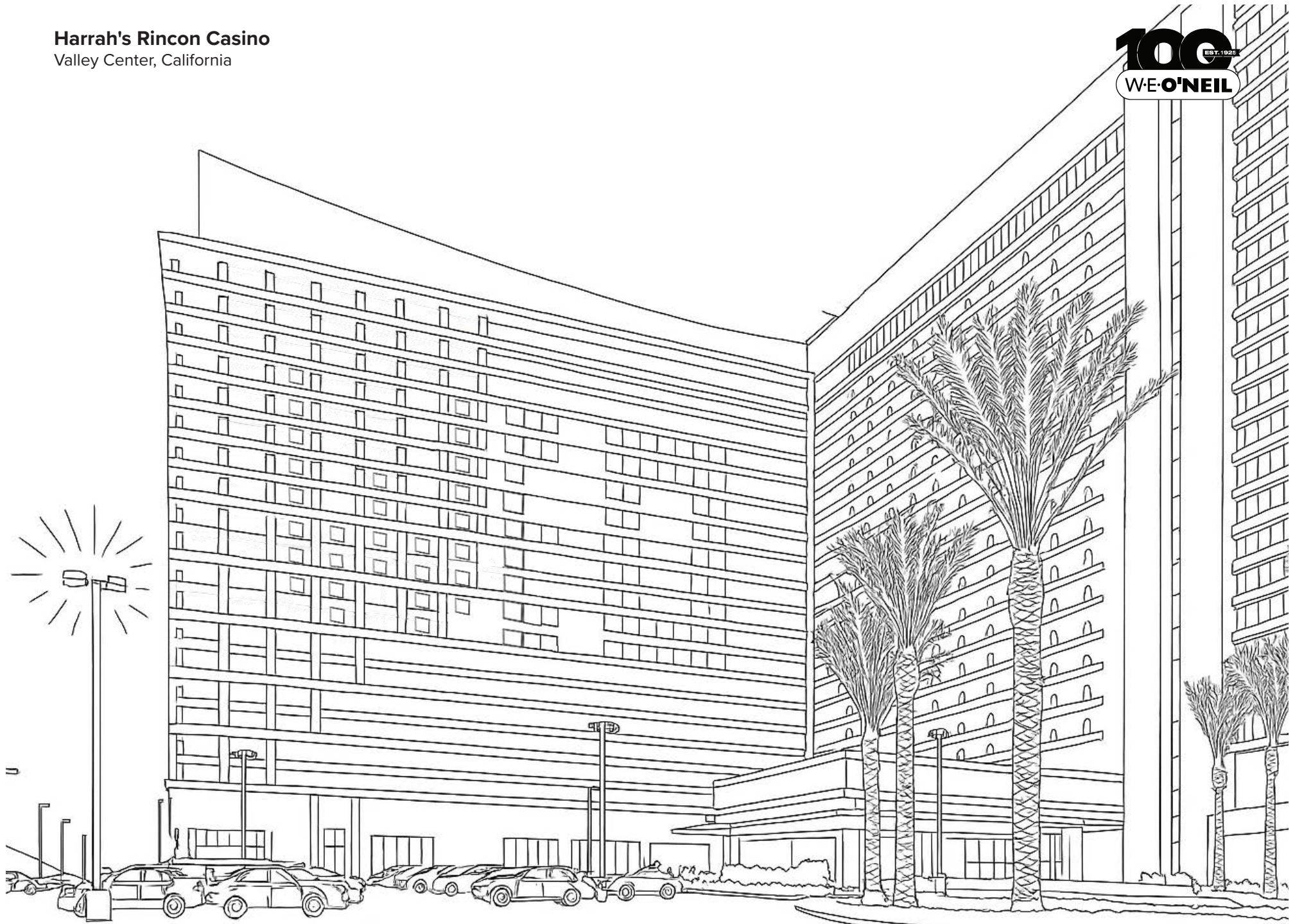


**DirectTV Los Angeles Broadcast Center**  
Culver City, California



**2000** | Led our expansion into the advanced industry market with more high-tech work and data centers.

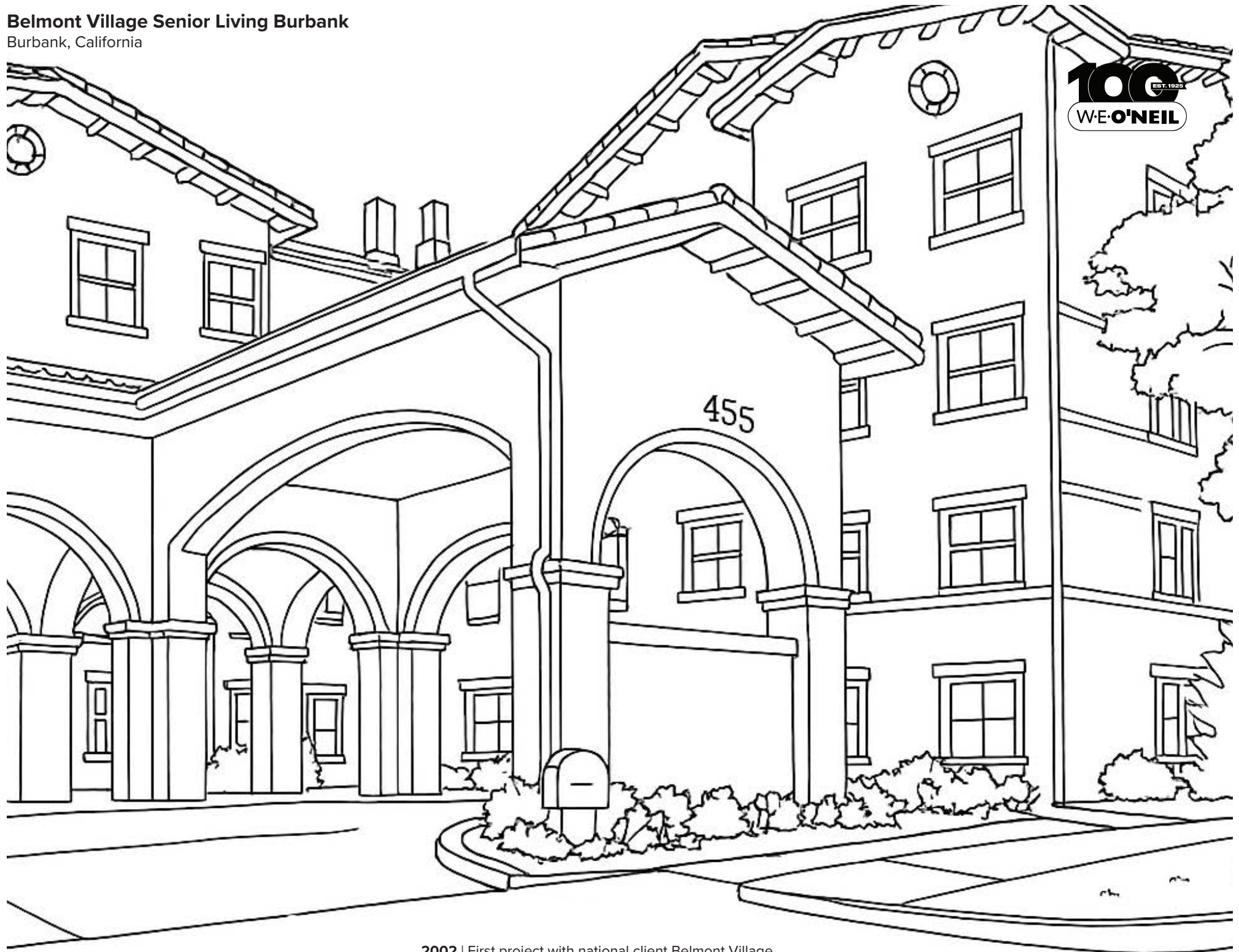
**Harrah's Rincon Casino**  
Valley Center, California



**2002** | First project of a longstanding client relationship, and John Finn's first project at W.E. O'Neil. (Shown here: Phase VII)

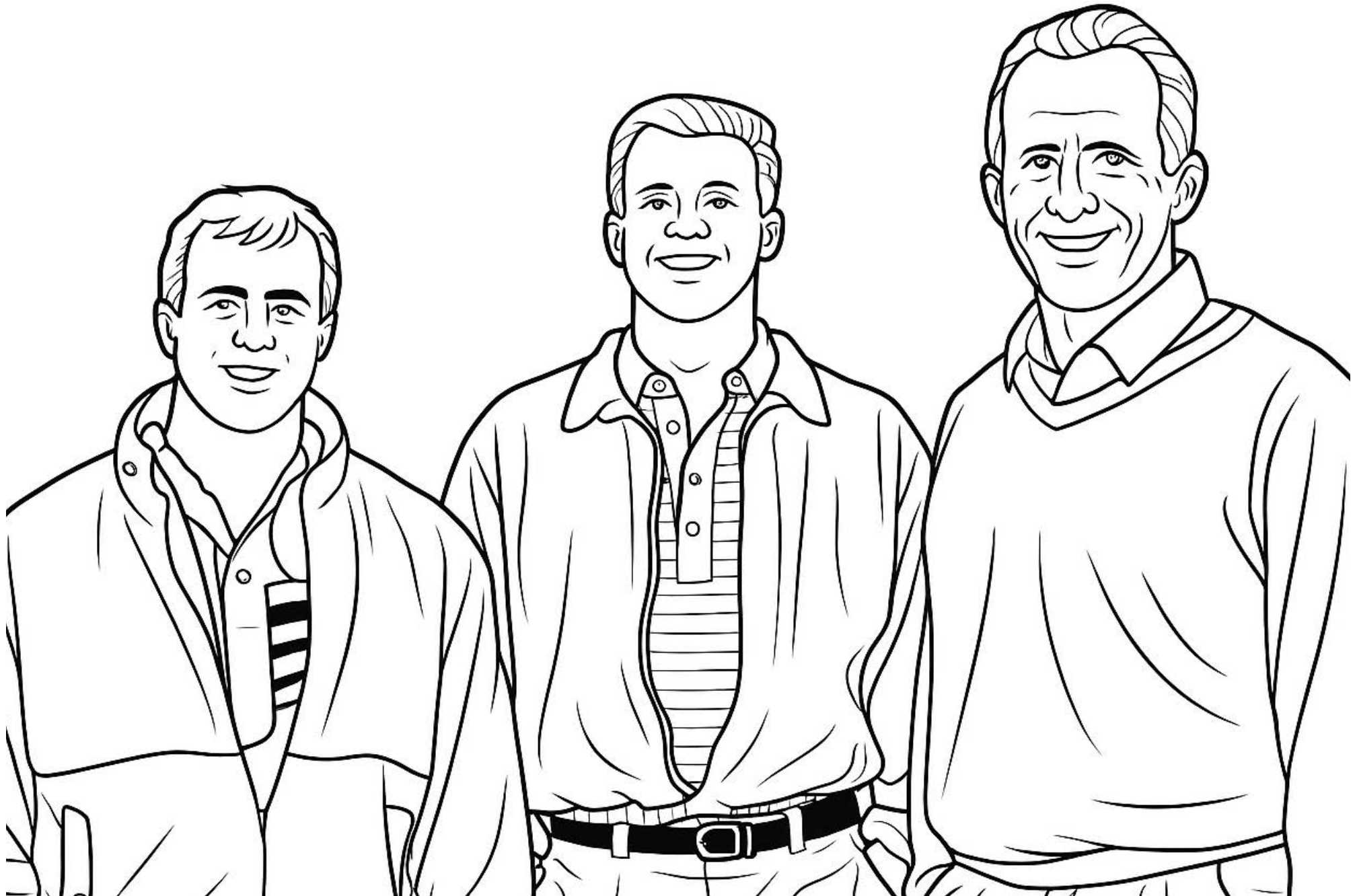


**Belmont Village Senior Living Burbank**  
Burbank, California



2002 | First project with national client Belmont Village.

Brian Ramsay, Todd Guthrie, and Rich Erickson.



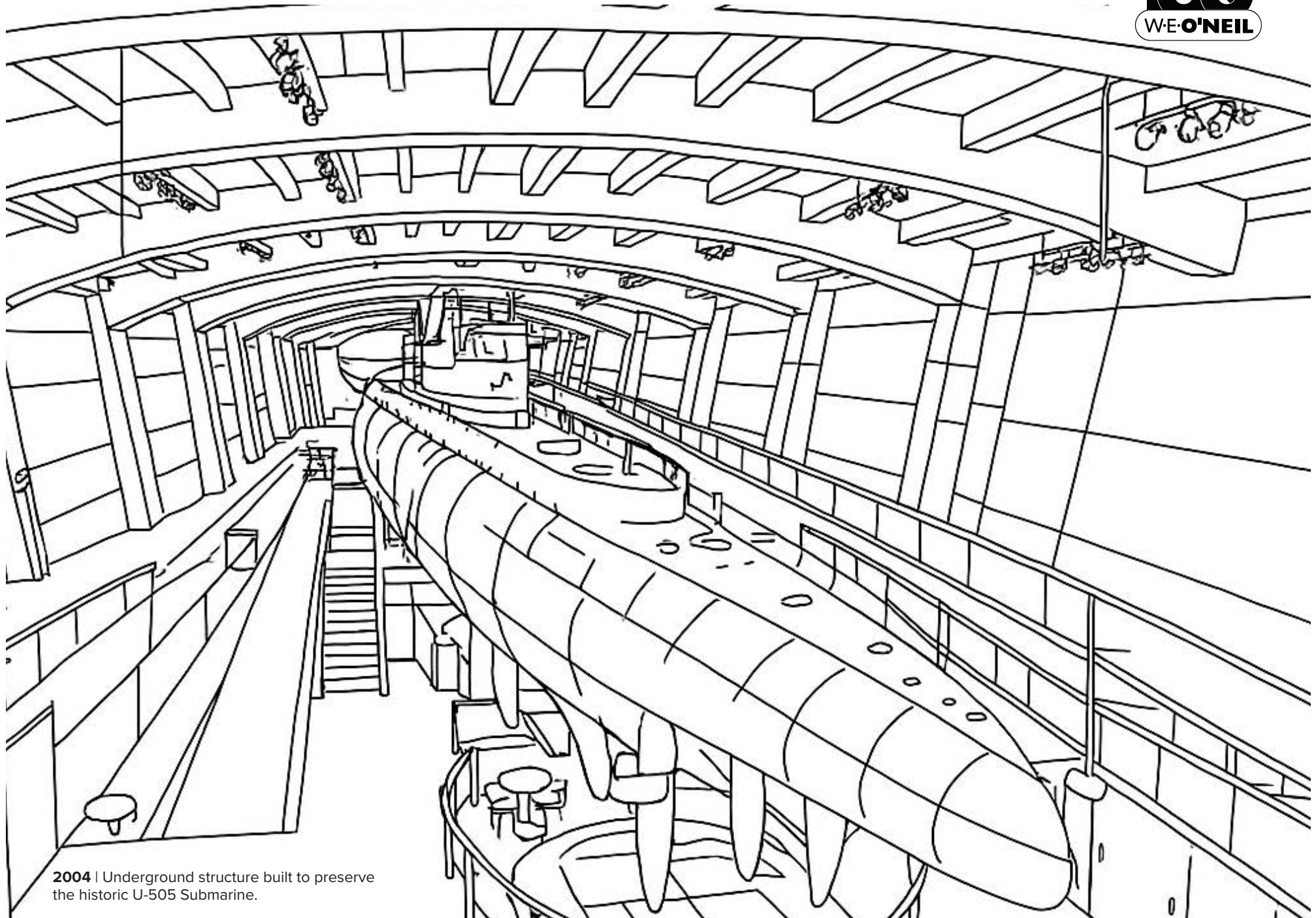


**Edwards Corner**  
Edwards, Colorado



**2003** | One of the first major projects in Colorado.

**Museum of Science and Industry, U505 Submarine**  
Chicago, Illinois



**2004** | Underground structure built to preserve the historic U-505 Submarine.

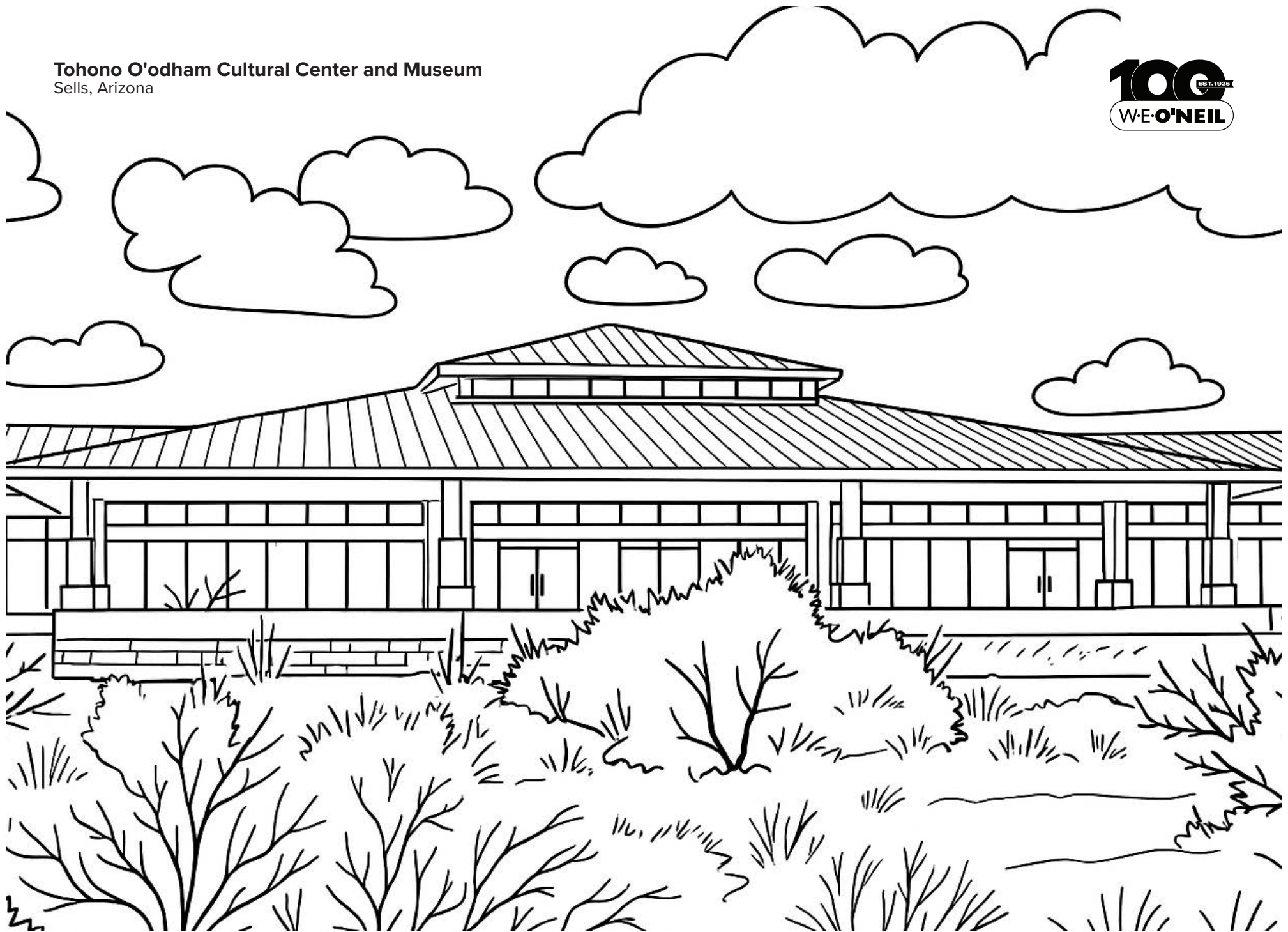


**Crown Fountain at Millennium Park**  
Chicago, Illinois



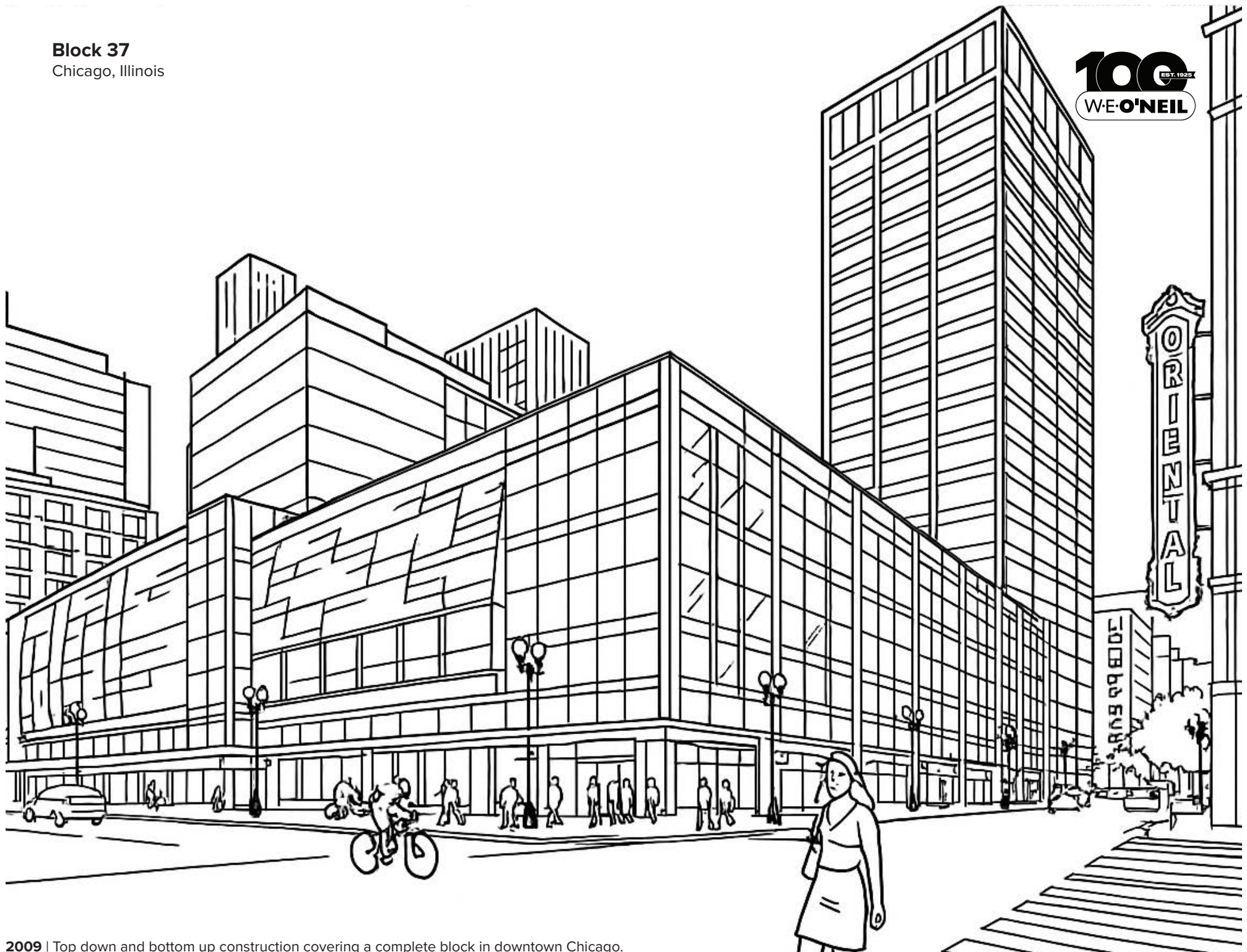
2004 | Landmark project in Chicago.

**Tohono O'odham Cultural Center and Museum**  
Sells, Arizona

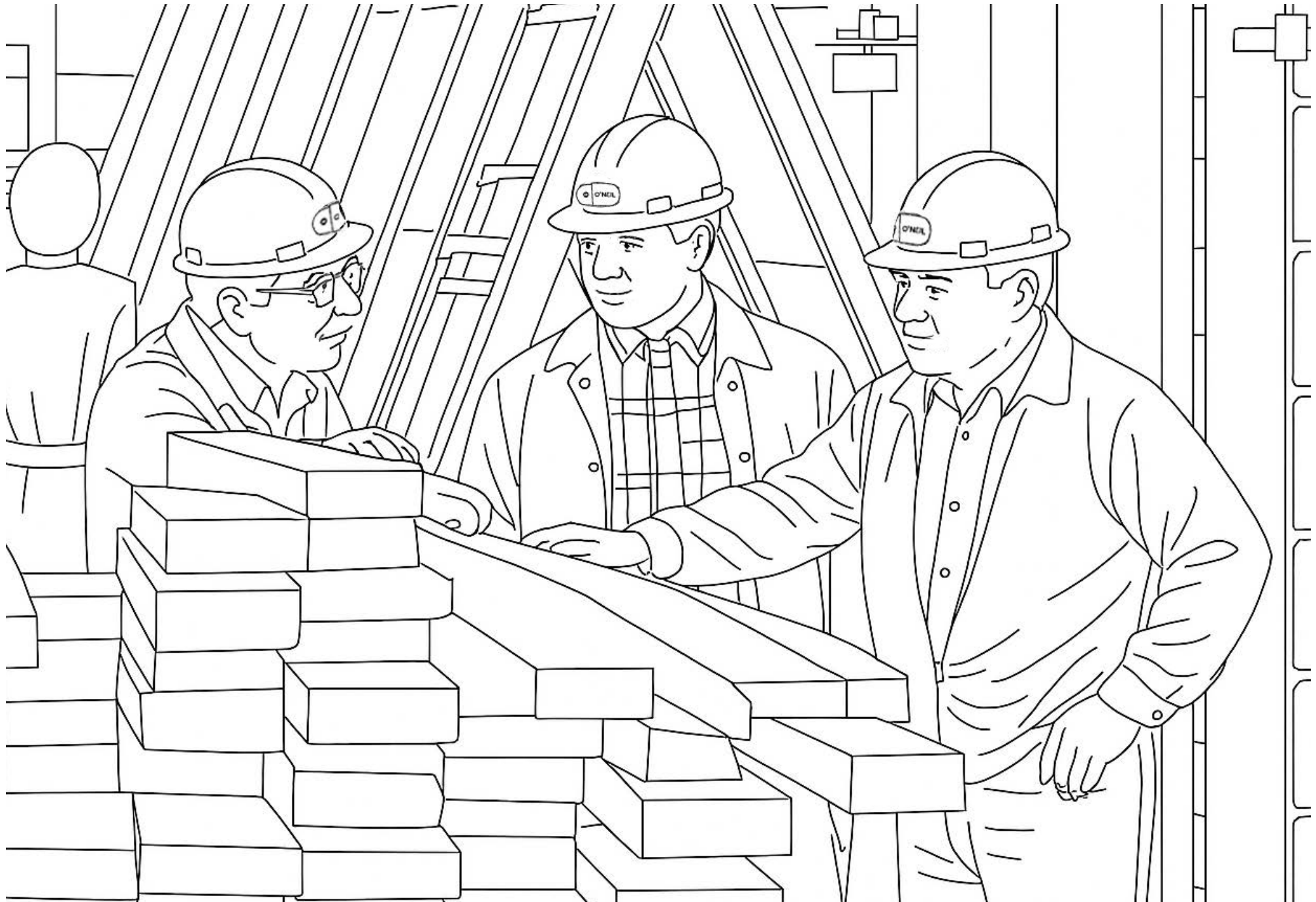




**Block 37**  
Chicago, Illinois



Dean Arnold, Jim Long, and Granville Erickson review construction documents onsite  
at the Orleans Court Apartment Building completed in 1987.





**Ritz-Carlton Resort Dove Mountain**  
Marana, Arizona



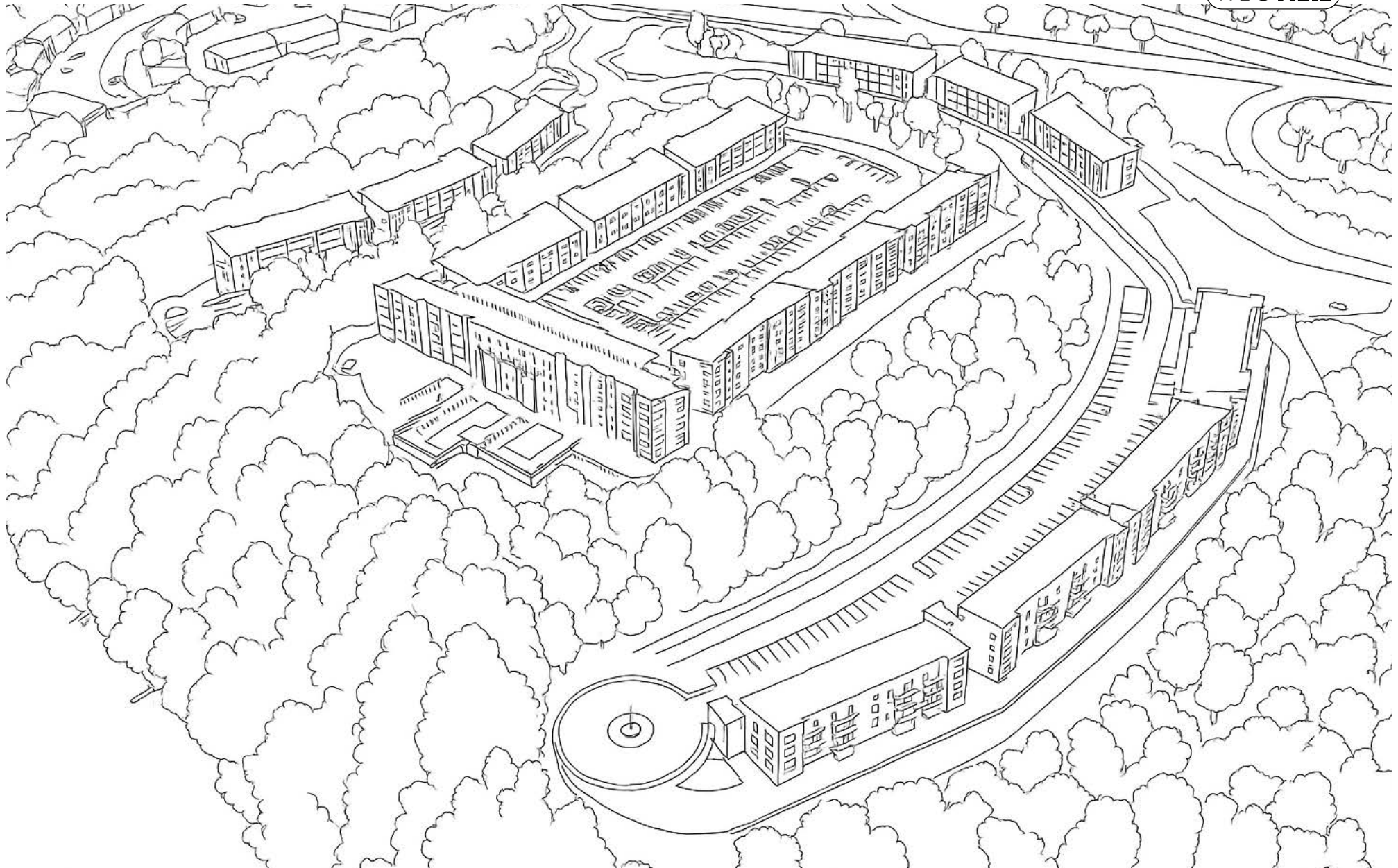
**Restoration Hardware**  
Denver, Colorado



**2015** | Marked significant increase in revenue growth for Colorado.



**Bells Bluff Apartments**  
Nashville, Tennessee



**2019** | A multi-million-dollar multifamily development with a repeat client atop a 44-acre domed site overlooking the Cumberland River.



**The Glen at Scripps Ranch**  
San Diego, California



2020 | San Diego's largest project to date, a 607,000 SF retirement community.



Colorado School of Mines,  
Spruce Hall  
Golden, Colorado



2020 | Award-winning large-scale dormitory project that achieved LEED Platinum.

Space Station Freedom Electrical Assembly Manufacturing and Test Facility  
Canoga Park, California



# SPACE STATION FREEDOM ELECTRICAL ASSEMBLY AND TEST FACILITY



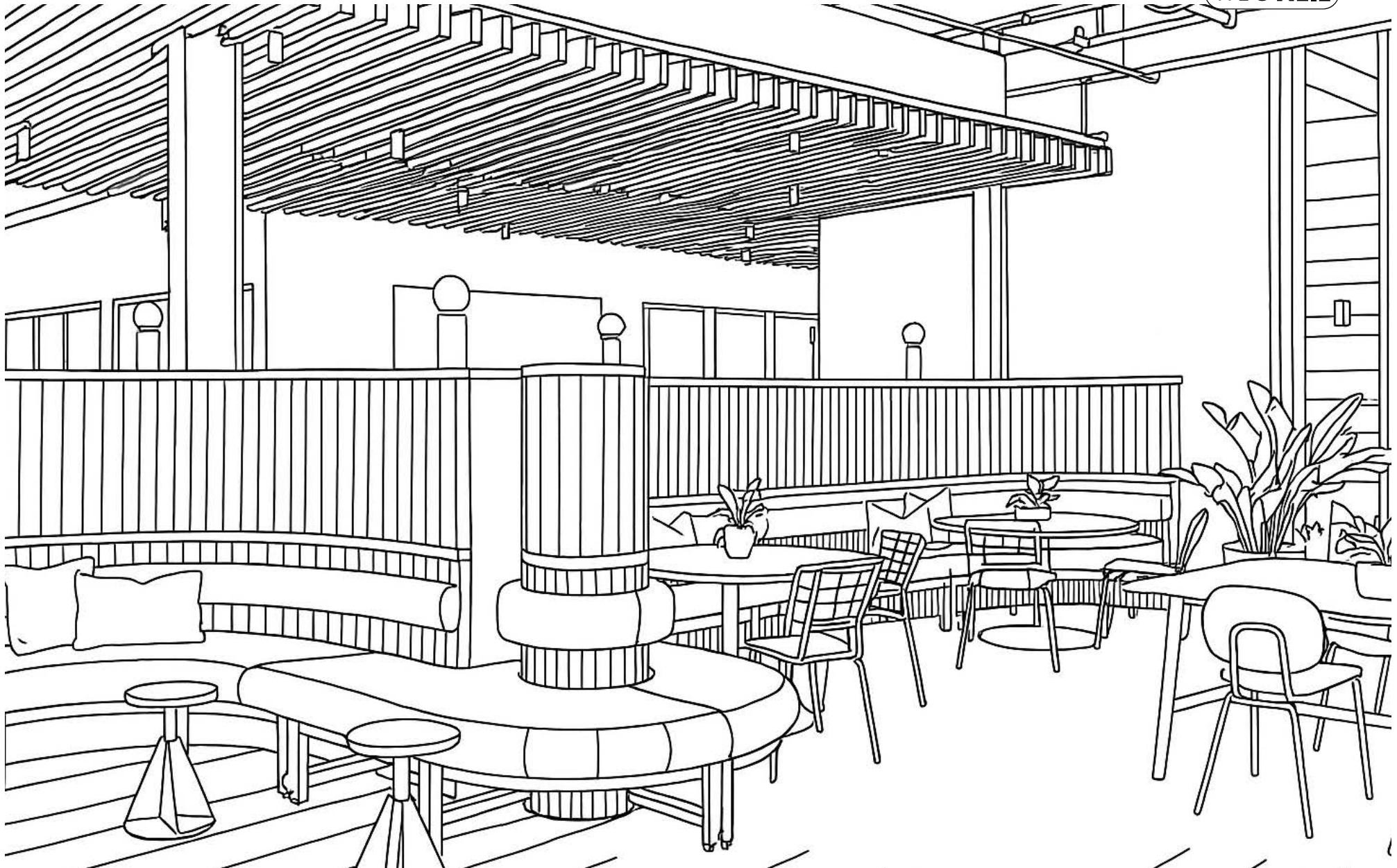


**300 Colorado Office Tower**  
Austin, Texas



**2020** | One of the first high-rise office towers in downtown Austin's Warehouse District.

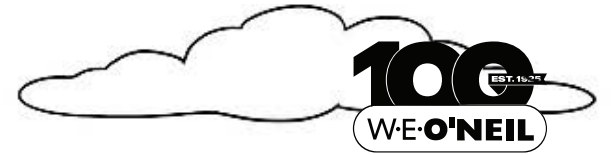
**The Artisan at James Avery Plaza**  
Cedar Park, Texas



**2021** | Boutique Class A office built for artisan jeweler James Avery, featuring steel and CLT structure. W.E. O'Neil built the first mass timber project in Austin.

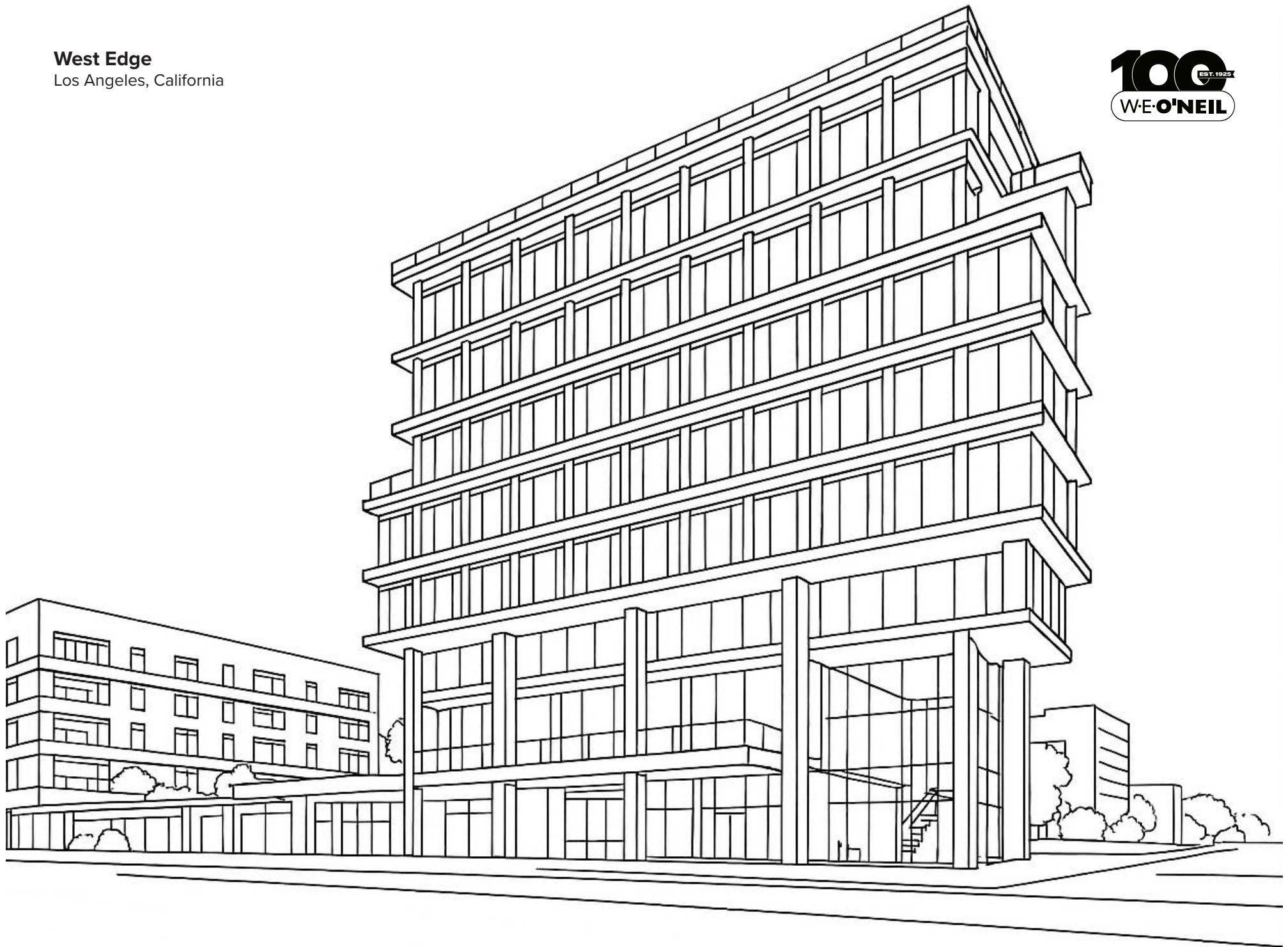


**Boulder Commons II**  
Boulder, Colorado



**2022** | Net Zero project that boasts energy-efficient building methods and bold sustainability goals.

**West Edge**  
Los Angeles, California



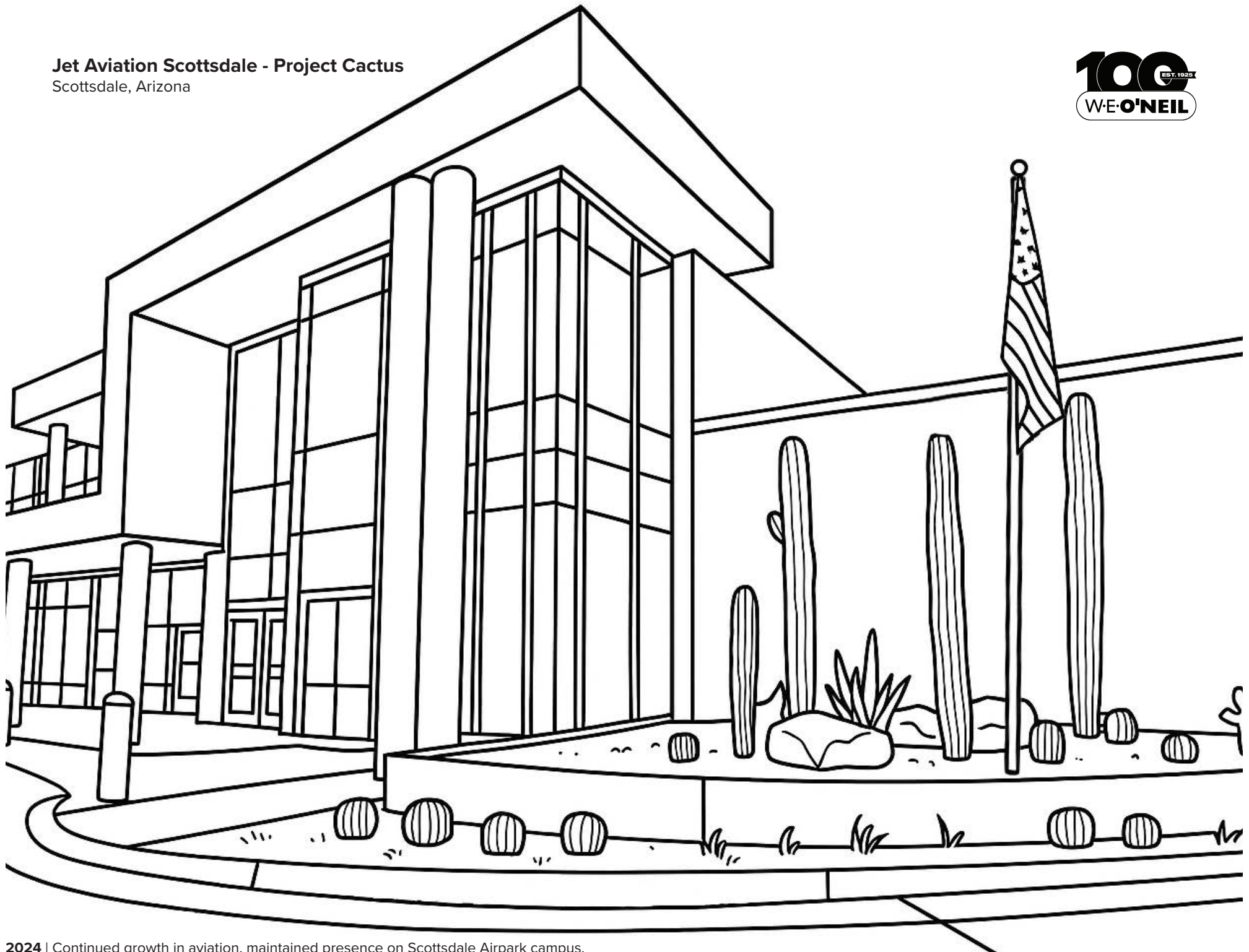
**2023** | Largest project in California to date. One of many for national repeat client Hines.



Bill O'Neil at the City Place jobsite, 1980s (Hartford, CT)



**Jet Aviation Scottsdale - Project Cactus**  
Scottsdale, Arizona





**LAX - Midfield Satellite Concourse South**  
Los Angeles, California

